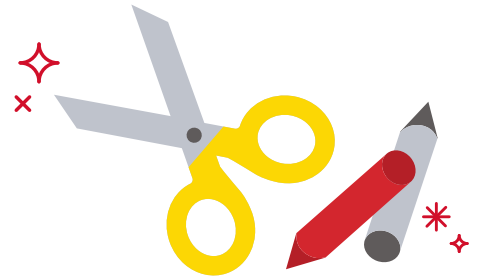




Panda Paper Plate Craft

Materials:

- Paper plate
- Black construction paper
- Scissors
- Glue
- Extra décor: eyes, etc.



This easy, adorable and fun craft uses a paper plate to make a Panda face! Check out our example below for some ideas of shapes to cut out and steps to take to make your Panda.



1 Cut out ears from the black construction paper.



2 Draw eyes, a nose and mouth on your panda, using the above as inspiration.



3 Glue the panda's ears on the plate. If you have extra décor, like eyes, glue them on as well.



4 That's it, you've got your panda!